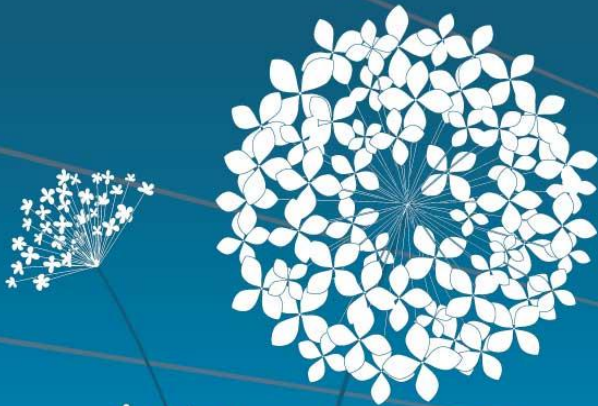


ANTWERPEN, 16 - 19 JUNE



## MEASURING GHG EMISSIONS IN RAIL: THE EU LEGISLATION & THE SECTOR'S NEEDS

*WEDNESDAY, 18 JUNE 2014*

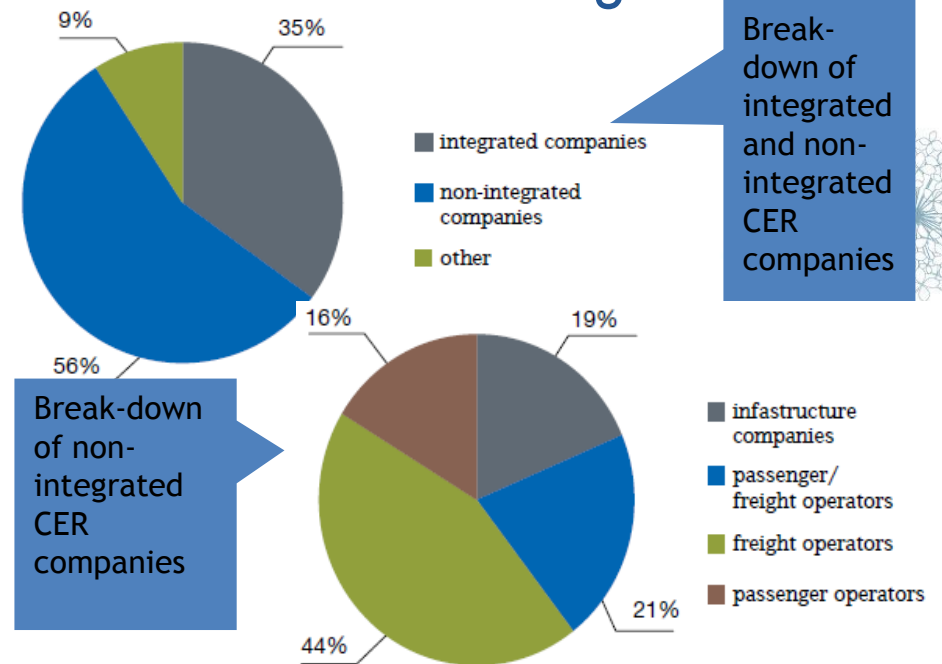
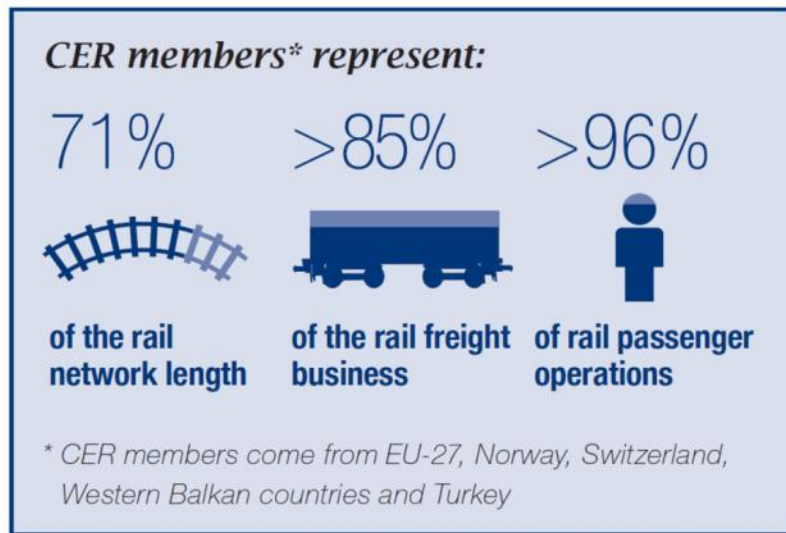
*GREEN ELECTRICITY AND CARBON DISCLOSURE WORKSHOP*

*Energy Efficiency, the best fuel to move our trains!*

# CER

CER represents over 70 members (23% privately owned):

- incumbents and new entrants,
- passenger and freight operators,
- integrated and separated infrastructure managers



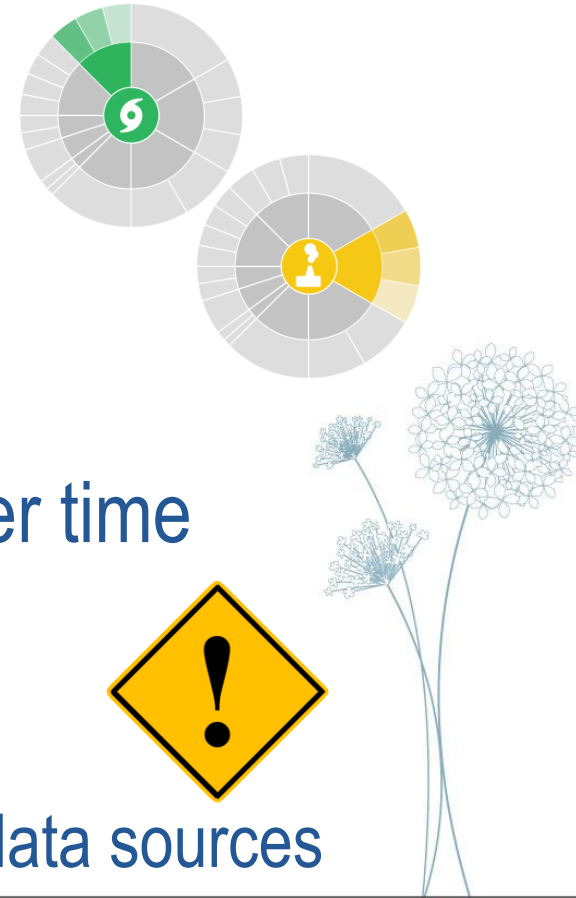
# ARTICLE 15 OF THE RENEWABLE ENERGY DIRECTIVE 2009/28/EC

- The guarantee of origin shall have **no function** in terms of a Member State's compliance with Article 3 [**mandatory national overall targets** etc]. Transfers of guarantees of origin, separately or together with the physical transfer of energy, shall have no effect on the decision of Member States to use statistical transfers, joint projects or joint support schemes for target compliance or on the calculation of the gross final consumption of energy from renewable sources in accordance with Article 5 [calculation of share of energy from renewable sources].
- **GOs have no role for targets, Eurostat & EEA data**

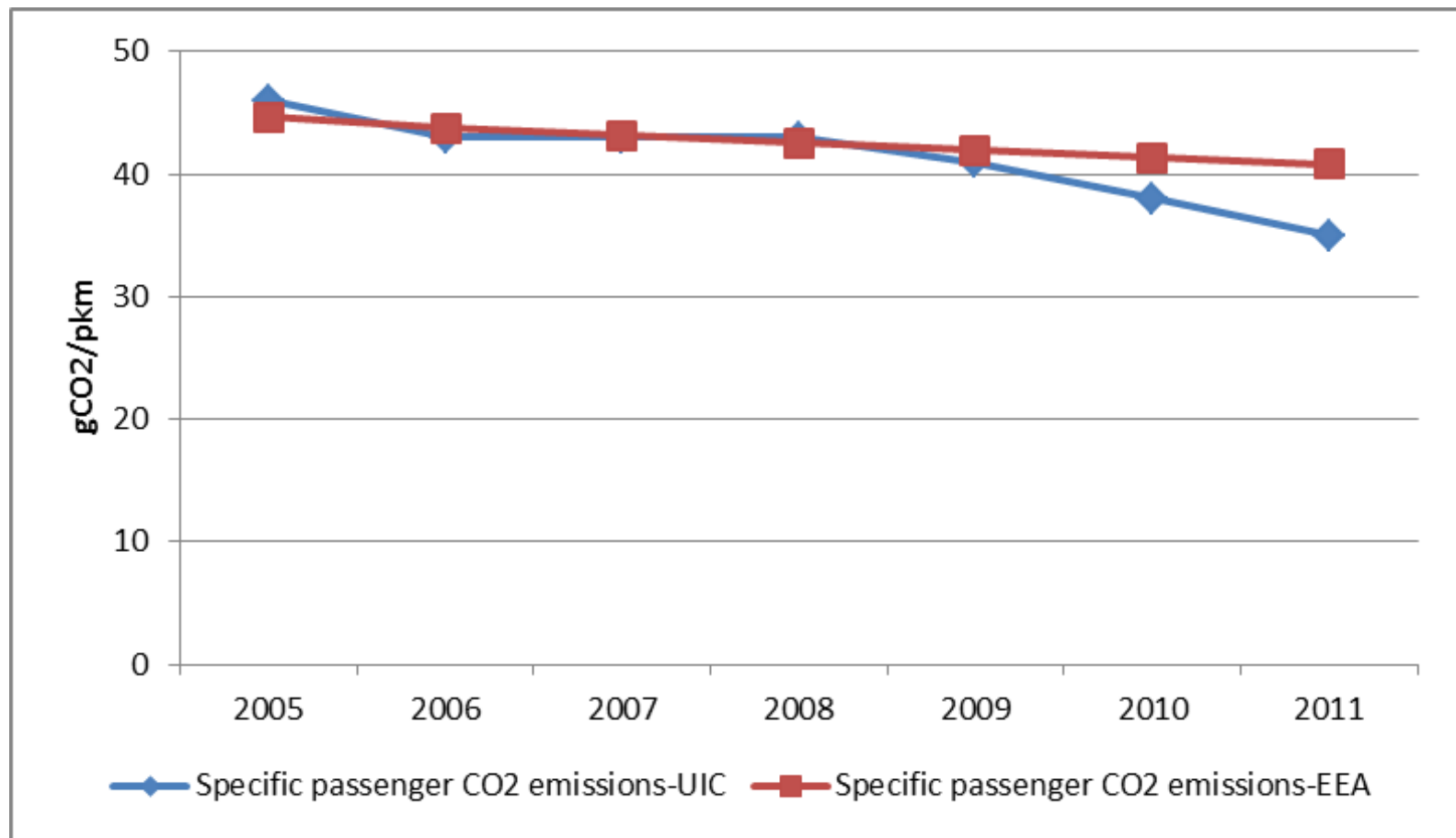


# DATA NEEDS FOR POLITICAL COMMUNICATION

- Inter-modal comparisons
  - Key environmental performance data
  - Different modes
  - Trusted source
- Evolution of rail sector emissions over time
  - UIC's work is appreciated
  - Progress towards sector commitments
  - Danger of big discrepancies between data sources



# SPECIFIC CO<sub>2</sub> EMISSIONS PER PKM FOR RAIL TRANSPORT IN EUROPE 2005-2011



# TERMINOLOGY

- Three different terms:
  - Green Certificates
  - Guarantees of Origin (GOs)
  - Renewable Energy Certificates (RECs)
- GOs = RECs; a transition period
- Green Certificates encompass everything BUT it also includes mechanism of support of renewable electricity generation



# DOUBLE COUNTING

- Residual mix = Grid mix - Tracked & claimed RES
- $\uparrow$  GOs bought  $\Rightarrow$  Green residual mix  $\downarrow$
- Residual mix ~~GOs~~
- There is double counting (estimated 20-25%)
- Renewable electricity into a railway network:
  - Physically
  - Contractually



# ADDITIONALITY

- GOs \$  $\Rightarrow$  **New** renewable energy installations
- New renewable energy generation





# SECTOR'S NEEDS

- Corporate strategic priorities:
  - ‘Green Strategies’ 😊
  - More renewable energy 😊
  - Measurement & reporting standards 🚩
- Sectoral reporting/targets
  - Minimise the discrepancies between data
  - Guarantees of Origin – Directive 2009/28/EC Art.15
  - Do not report with GOs: Physical approach



# THANK YOU FOR YOUR ATTENTION!

**Ethem Pekin**

Environmental Economist

Email: [etp@cer.be](mailto:etp@cer.be)

